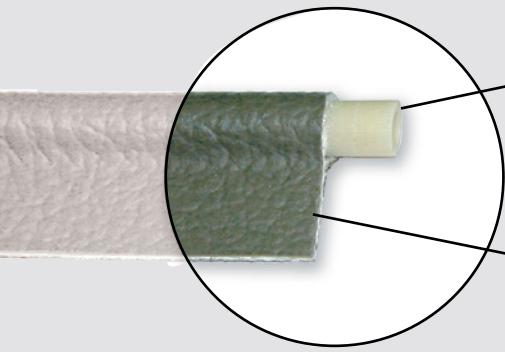


Construction

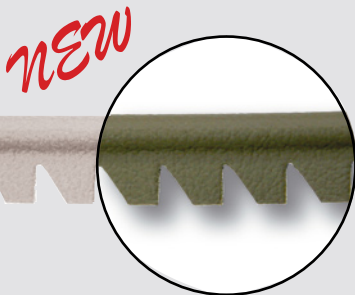


Piping Core	
Dimension	3mm - 4.5mm dia.
Materials	Polyethylene Parvic (Solid or Hollow)

Flange	
Dimension	10mm - 20mm
Materials	Leathercloth Fabric Leather

Leedum produce a range of covered pipings in a variety of materials for the automobile and allied industries. All our pipings are made to meet the technical specifications of our customers. We can manufacture piping with the required resilience and flexibility to suit your project.

Flange Options



Our 'Easyflex' piping has a high degree of flexibility without twisting and puckering the sewn seam.



We also produce a traditional notched piping with a softened flange to help with assembly and machining.

Cores

We manufacture our own piping core, both hollow and solid, in a variety of sizes using a range of different plastic materials.

